

产品特征 FEATURES

- 一体化磁屏蔽结构，EMC 效果极佳。抗EMI性能佳
- 直接在磁芯上金属化电极，抗跌落冲击强，经久耐用
- 天然分布式气隙，具有良好的耐交-直流叠加特性
- 合金粉末一体成型，结构紧实，物理强度高。
- 优质材料，磁损低、效率高。
- 温度稳定性好。
- 全屏蔽结构，漏磁小。
- 工作频率宽，在 1KHz 到高达 5MHz 的宽频带下保证稳定输出。

产品应用 APPLICATIONS

- 平板电脑、NoteBook、大功率充电头、移动电源
- 移动电源、液晶电视主板、电子烟
- 安防、数字功放、无线充电器
- 工控主板、PC主板、高频显卡

产品型号 PRODUCT IDENTIFICATION

HSDH 0630 H - 1R0 M --

① ② ③ - ④ ⑤ ⑥

① Type	
HSDH	SMD Integrated Inductor

② External Dimensions (L×W×H) [mm]	
0412	4.4*4.2*1.2
0650	7.1*6.6*5.0
1265	14.0*12.8*6.5

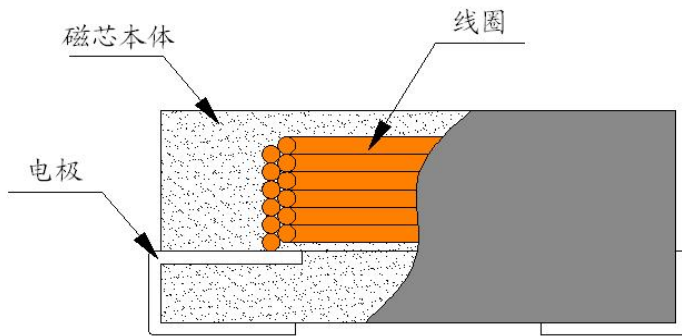
③ Material Code	
T	还原铁粉
H	合金粉
Q	羰基粉

④ Nominal Inductance	
Example	Nominal Value
R10	0.1μH
1R0	1.0μH
220	22μH

⑤ Inductance Tolerance	
K	±10%
M	±20%
N	±30%

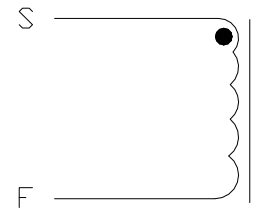
⑥ Code	
--	内部代码（常规无）
01	内部代码

产品结构 Product Structure



内部结构
Internal Structure

" ● " START FOR STAND

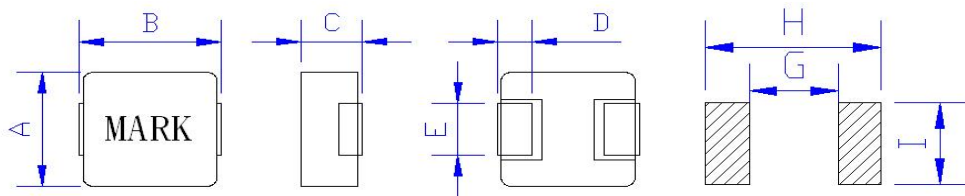


原理图
Schematic Diagram

物料清单 Material List

序号 No.	项目 Item	材料 Material	材料供应商 Supplier of the Material
1	磁芯 Core	合金粉：铁硅铬体系 Fe-Si-Cr	MD OR EQ
2	铜线 Copper	聚酯亚胺漆包线 Polyester Imide Enamelled Wire	ELEKTRISOLA OR EQ
3	端电极 Terminal Electrode	铜 Cu	BD OR EQ
		Ni/Sn镀层 Ni/Sn Plating	
4	墨水 Ink	黑色油墨 Black Ink	TXQ OR EQ

产品尺寸 Product Size



单位 Unit: 毫米 (mm)

型号 Size	A	B	C	D	E	G	H	I
0412系列	4.20 ± 0.30	4.45 ± 0.50	1.20 Max	0.80 ± 0.30	2.00 ± 0.30	2.20 Ref	5.20 Ref	2.50 Ref
0415系列	4.20 ± 0.30	4.45 ± 0.50	1.50 Max	1.10 ± 0.30	2.00 ± 0.30	1.70 Ref	5.10 Ref	2.30 Ref
0420系列	4.20 ± 0.30	4.45 ± 0.50	2.00 Max	1.10 ± 0.30	2.00 ± 0.30	1.70 Ref	5.10 Ref	2.30 Ref
0515系列	5.20 ± 0.30	5.60 ± 0.50	1.50 Max	1.30 ± 0.50	2.20 ± 0.30	1.90 Ref	6.20 Ref	2.50 Ref
0518系列	5.20 ± 0.30	5.60 ± 0.50	1.80 Max	1.30 ± 0.50	2.20 ± 0.30	1.90 Ref	6.20 Ref	2.50 Ref
0520系列	5.20 ± 0.30	5.60 ± 0.50	2.00 Max	1.30 ± 0.50	2.20 ± 0.30	1.90 Ref	6.20 Ref	2.50 Ref
0530系列	5.20 ± 0.30	5.60 ± 0.50	3.00 Max	1.30 ± 0.50	2.20 ± 0.30	1.90 Ref	6.20 Ref	2.50 Ref
0540系列	5.20 ± 0.30	5.60 ± 0.50	4.00 Max	1.30 ± 0.50	2.20 ± 0.30	1.90 Ref	6.20 Ref	2.50 Ref
0615系列	6.60 ± 0.30	7.10 ± 0.50	1.50 Max	1.60 ± 0.50	3.00 ± 0.30	2.90 Ref	7.80 Ref	3.50 Ref
0618系列	6.60 ± 0.30	7.10 ± 0.50	1.80 Max	1.60 ± 0.50	3.00 ± 0.30	2.90 Ref	7.80 Ref	3.50 Ref
0620系列	6.60 ± 0.30	7.10 ± 0.50	2.00 Max	1.60 ± 0.50	3.00 ± 0.30	2.90 Ref	7.80 Ref	3.50 Ref
0624系列	6.60 ± 0.30	7.10 ± 0.50	2.40 Max	1.60 ± 0.50	3.00 ± 0.30	2.90 Ref	7.80 Ref	3.50 Ref
0628系列	6.60 ± 0.30	7.10 ± 0.50	2.80 Max	1.60 ± 0.50	3.00 ± 0.30	2.90 Ref	7.80 Ref	3.50 Ref
0630系列	6.60 ± 0.30	7.10 ± 0.50	3.00 Max	1.60 ± 0.50	3.00 ± 0.30	2.90 Ref	7.80 Ref	3.50 Ref
0640系列	6.60 ± 0.30	7.10 ± 0.50	4.00 Max	1.60 ± 0.50	3.00 ± 0.30	2.90 Ref	7.80 Ref	3.50 Ref
0650系列	6.60 ± 0.30	7.10 ± 0.50	5.00 Max	1.60 ± 0.50	3.00 ± 0.30	2.90 Ref	7.80 Ref	3.50 Ref
0830系列	8.00 ± 0.30	8.70 ± 0.50	3.00 Max	1.80 ± 0.30	3.00 ± 0.30	4.50 Ref	9.00 Ref	3.50 Ref
0840系列	8.00 ± 0.30	8.70 ± 0.50	4.00 Max	1.80 ± 0.30	3.00 ± 0.30	4.50 Ref	9.00 Ref	3.50 Ref
0850系列	8.00 ± 0.30	8.70 ± 0.50	5.00 Max	1.80 ± 0.30	3.00 ± 0.30	4.50 Ref	9.00 Ref	3.50 Ref
1030系列	10.20 ± 0.30	11.00 ± 0.50	3.00 Max	2.00 ± 0.50	3.00 ± 0.30	6.00 Ref	11.80 Ref	3.50 Ref
1040系列	10.20 ± 0.30	11.00 ± 0.50	4.00 Max	2.00 ± 0.50	3.00 ± 0.30	6.00 Ref	11.80 Ref	3.50 Ref
1045系列	10.20 ± 0.30	11.00 ± 0.50	4.50 Max	2.00 ± 0.50	3.00 ± 0.30	6.00 Ref	11.80 Ref	3.50 Ref
1050系列	10.20 ± 0.30	11.00 ± 0.50	5.00 Max	2.00 ± 0.50	3.00 ± 0.30	6.00 Ref	11.80 Ref	3.50 Ref
1235系列	12.80 ± 0.30	14.00 ± 0.50	3.50 Max	2.50 ± 0.50	3.80 ± 0.30	7.60 Ref	14.10 Ref	4.50 Ref
1240系列	12.80 ± 0.30	14.00 ± 0.50	4.00 Max	2.50 ± 0.50	3.80 ± 0.30	7.60 Ref	14.10 Ref	4.50 Ref
1250系列	12.80 ± 0.30	14.00 ± 0.50	5.00 Max	2.50 ± 0.50	3.80 ± 0.30	7.60 Ref	14.10 Ref	4.50 Ref
1260系列	12.80 ± 0.30	14.00 ± 0.50	6.00 Max	2.50 ± 0.50	3.80 ± 0.30	7.60 Ref	14.10 Ref	4.50 Ref
1265系列	12.80 ± 0.30	14.00 ± 0.50	6.50 Max	2.50 ± 0.50	3.80 ± 0.30	7.60 Ref	14.10 Ref	4.50 Ref
1770系列	17.15 ± 0.30	17.50 ± 0.50	7.00 Max	2.00 ± 0.50	11.9 ± 0.30	12.1 Ref	17.60 Ref	12.0 Ref

电性能参数 Electrical Characteristic List (0412系列)

型号规格 Part NO.	标称感量 Inductance (μH)	精度级别 Accuracy Grade	测试频率 Test Frequency (KHz)	测试电压 Test Voltage (mV)	直流电阻 Rdc ($\text{m}\Omega$)		额定电流 Idc (A)		饱和电流 Isat (A)	
					Typ	Max	Max	Typ	Max	Typ
HSDH0412H-R47M	0.47	$\pm 20\%$	100	1000	18.0	21.0	6.0	6.2	8.0	8.5
HSDH0412H-R60M	0.60	$\pm 20\%$	100	1000	25.0	30.0	5.0	5.2	7.5	8.0
HSDH0412H-R68M	0.68	$\pm 20\%$	100	1000	27.0	33.0	4.7	4.9	5.8	6.0
HSDH0412H-1R0M	1.0	$\pm 20\%$	100	1000	40.0	48.0	4.5	4.7	5.3	5.5
HSDH0412H-1R5M	1.5	$\pm 20\%$	100	1000	65.0	72.0	3.3	3.5	3.8	4.0
HSDH0412H-2R2M	2.2	$\pm 20\%$	100	1000	68.0	80.0	2.8	3.0	3.8	4.2
HSDH0412H-3R3M	3.3	$\pm 20\%$	100	1000	128.0	142.0	2.0	2.2	2.8	3.0
HSDH0412H-4R7M	4.7	$\pm 20\%$	100	1000	162.0	180.0	1.8	2.0	2.8	2.9

电性能参数 Electrical Characteristic List (0415系列)

型号规格 Part NO.	标称感量 Inductance (μH)	精度级别 Accuracy Grade	测试频率 Test Frequency (KHz)	测试电压 Test Voltage (mV)	直流电阻 Rdc ($\text{m}\Omega$)		额定电流 Idc (A)		饱和电流 Isat (A)	
					Typ	Max	Max	Typ	Max	Typ
HSDH0415H-1R0M	1.0	$\pm 20\%$	100	1000	38.0	46.0	4.8	5.0	6.8	7.0
HSDH0415H-1R5M	1.5	$\pm 20\%$	100	1000	42.5	51.0	4.3	4.5	5.0	5.5
HSDH0415H-2R2M	2.2	$\pm 20\%$	100	1000	64.0	72.0	3.0	3.2	4.3	4.5
HSDH0415H-4R7M	4.7	$\pm 20\%$	100	1000	123.0	138.0	2.0	2.2	2.8	3.0

电性能参数 Electrical Characteristic List (0420系列)

型号规格 Part NO.	标称感量 Inductance (μH)	精度级别 Accuracy Grade	测试频率 Test Frequency (KHz)	测试电压 Test Voltage (mV)	直流电阻 Rdc ($\text{m}\Omega$)		额定电流 Idc (A)		饱和电流 Isat (A)	
					Typ	Max	Max	Typ	Max	Typ
HSDH0420H-R10N	0.10	$\pm 30\%$	100	1000	4.4	5.3	12.0	13.0	20.0	22.0
HSDH0420H-R22M	0.22	$\pm 20\%$	100	1000	5.3	6.4	10.0	12.0	13.0	14.0
HSDH0420H-R27M	0.27	$\pm 20\%$	100	1000	8.5	10.2	8.5	9.0	11.0	12.0
HSDH0420H-R33M	0.33	$\pm 20\%$	100	1000	8.5	10.2	8.5	9.0	11.0	12.0
HSDH0420H-R47M	0.47	$\pm 20\%$	100	1000	10.5	13.2	8.0	8.5	10.0	11.0
HSDH0420H-R56M	0.56	$\pm 20\%$	100	1000	16.5	20.0	6.5	7.0	9.0	10.0
HSDH0420H-R68M	0.68	$\pm 20\%$	100	1000	17.5	21.0	6.0	6.5	8.5	9.0
HSDH0420H-1R0M	1.0	$\pm 20\%$	100	1000	27.0	34.0	5.5	6.0	7.0	8.0
HSDH0420H-1R5M	1.5	$\pm 20\%$	100	1000	32.5	39.0	4.5	4.8	6.5	7.0
HSDH0420H-2R2M	2.2	$\pm 20\%$	100	1000	48.0	58.0	3.6	4.0	5.5	6.0
HSDH0420H-3R3M	3.3	$\pm 20\%$	100	1000	77.0	85.0	3.0	3.3	4.0	4.5
HSDH0420H-4R7M	4.7	$\pm 20\%$	100	1000	100.0	110.0	2.2	2.5	3.0	3.5
HSDH0420H-6R8M	6.8	$\pm 20\%$	100	1000	142.0	159.0	2.0	2.2	2.5	3.0

电性能参数 Electrical Characteristic List (0420系列)

型号规格 Part NO.	标称感量 Inductance (μ H)	精度级别 Accuracy Grade	测试频率 Test Frequency (KHz)	测试电压 Test Voltage (mV)	直流电阻 Rdc (m Ω)		额定电流 Idc (A)		饱和电流 Isat (A)	
					Typ	Max	Max	Typ	Max	Typ
HSDH0420H-100M	10	$\pm 20\%$	100	1000	220.0	245.0	1.6	1.8	2.2	2.5
HSDH0420H-150M	15	$\pm 20\%$	100	1000	310.0	341.0	1.4	1.6	1.8	2.0
HSDH0420H-220M	22	$\pm 20\%$	100	1000	380.0	420.0	1.0	1.2	1.5	1.6

电性能参数 Electrical Characteristic List (0515系列)

型号规格 Part NO.	标称感量 Inductance (μ H)	精度级别 Accuracy Grade	测试频率 Test Frequency (KHz)	测试电压 Test Voltage (mV)	直流电阻 Rdc (m Ω)		额定电流 Idc (A)		饱和电流 Isat (A)	
					Typ	Max	Max	Typ	Max	Typ
HSDH0515H-R10N	0.10	$\pm 30\%$	100	1000	3.5	4.2	10.0	12.0	16.0	18.0
HSDH0515H-R47M	0.47	$\pm 20\%$	100	1000	10.0	12.0	9.0	10.0	11.0	12.0
HSDH0515H-1R0M	1.0	$\pm 20\%$	100	1000	28.0	34.0	4.7	5.3	5.5	6.0
HSDH0515H-2R2M	2.2	$\pm 20\%$	100	1000	73.0	82.0	3.0	3.2	4.0	4.5
HSDH0515H-3R3M	3.3	$\pm 20\%$	100	1000	100.0	110.0	2.5	2.8	3.0	3.5
HSDH0515H-4R7M	4.7	$\pm 20\%$	100	1000	128.0	142.0	2.2	2.5	2.5	3.0

电性能参数 Electrical Characteristic List (0518系列)

型号规格 Part NO.	标称感量 Inductance (μ H)	精度级别 Accuracy Grade	测试频率 Test Frequency (KHz)	测试电压 Test Voltage (mV)	直流电阻 Rdc (m Ω)		额定电流 Idc (A)		饱和电流 Isat (A)	
					Typ	Max	Max	Typ	Max	Typ
HSDH0518H-R47M	0.47	$\pm 20\%$	100	1000	10.0	12.0	9.0	9.5	11.0	12.0
HSDH0518H-R68M	0.68	$\pm 20\%$	100	1000	12.0	15.0	8.5	9.0	12.5	13.2
HSDH0518H-1R0M	1.0	$\pm 20\%$	100	1000	17.0	22.0	6.5	7.0	7.5	8.0
HSDH0518H-1R5M	1.5	$\pm 20\%$	100	1000	28.0	34.0	5.0	5.2	7.0	7.5
HSDH0518H-2R2M	2.2	$\pm 20\%$	100	1000	34.0	42.0	4.6	4.8	6.5	7.0
HSDH0518H-3R3M	3.3	$\pm 20\%$	100	1000	76.0	84.0	2.8	3.0	4.5	5.0
HSDH0518H-4R7M	4.7	$\pm 20\%$	100	1000	84.0	94.0	2.6	2.8	4.0	4.5
HSDH0518H-5R6M	5.6	$\pm 20\%$	100	1000	95.0	105.0	2.5	2.7	3.8	4.0
HSDH0518H-6R8M	6.8	$\pm 20\%$	100	1000	148.0	163.0	1.9	2.1	3.5	3.8
HSDH0518H-100M	10	$\pm 20\%$	100	1000	165.0	182.0	1.8	2.0	3.0	3.5

电性能参数 Electrical Characteristic List (0520系列)

型号规格 Part NO.	标称感量 Inductance (μH)	精度级别 Accuracy Grade	测试频率 Test Frequency (KHz)	测试电压 Test Voltage (mV)	直流电阻 Rdc ($\text{m}\Omega$)		额定电流 Idc (A)		饱和电流 Isat (A)	
					Typ	Max	Max	Typ	Max	Typ
HSDH0520H-R10N	0.10	$\pm 30\%$	100	1000	2.8	3.4	16.0	17.0	20.0	22.0
HSDH0520H-R15M	0.15	$\pm 20\%$	100	1000	3.3	4.0	15.0	16.0	18.0	20.0
HSDH0520H-R22M	0.22	$\pm 20\%$	100	1000	4.4	5.3	11.0	12.0	14.0	15.0
HSDH0520H-R33M	0.33	$\pm 20\%$	100	1000	7.2	8.7	10.0	10.5	12.0	13.0
HSDH0520H-R47M	0.47	$\pm 20\%$	100	1000	10.0	12.0	9.0	9.5	11.0	12.0
HSDH0520H-R68M	0.68	$\pm 20\%$	100	1000	12.5	15.0	7.5	8.5	10.0	11.0
HSDH0520H-1R0M	1.0	$\pm 20\%$	100	1000	17.0	22.0	7.0	8.0	9.0	10.0
HSDH0520H-1R5M	1.5	$\pm 20\%$	100	1000	26.0	32.0	5.5	6.0	7.5	8.0
HSDH0520H-2R2M	2.2	$\pm 20\%$	100	1000	36.0	45.0	4.5	5.0	6.5	7.0
HSDH0520H-3R3M	3.3	$\pm 20\%$	100	1000	58.0	64.0	3.5	3.7	5.5	6.0
HSDH0520H-4R7M	4.7	$\pm 20\%$	100	1000	84.0	94.0	2.8	3.0	4.5	5.0
HSDH0520H-5R6M	5.6	$\pm 20\%$	100	1000	95.0	105.0	2.5	2.8	3.8	4.0
HSDH0520H-6R8M	6.8	$\pm 20\%$	100	1000	124.0	140.0	2.0	2.2	3.8	4.0
HSDH0520H-100M	10	$\pm 20\%$	100	1000	170.0	187.0	1.8	2.0	2.8	3.0

电性能参数 Electrical Characteristic List (0530系列)

型号规格 Part NO.	标称感量 Inductance (μH)	精度级别 Accuracy Grade	测试频率 Test Frequency (KHz)	测试电压 Test Voltage (mV)	直流电阻 Rdc ($\text{m}\Omega$)		额定电流 Idc (A)		饱和电流 Isat (A)	
					Typ	Max	Max	Typ	Max	Typ
HSDH0530H-R10N	0.10	$\pm 30\%$	100	1000	2.5	3.0	20.0	22.0	33.0	35.0
HSDH0530H-R22M	0.22	$\pm 20\%$	100	1000	3.7	4.5	18.0	20.0	24.0	25.0
HSDH0530H-R33M	0.33	$\pm 20\%$	100	1000	5.0	6.0	11.0	12.0	18.0	20.0
HSDH0530H-R47M	0.47	$\pm 20\%$	100	1000	6.5	7.8	10.0	11.0	16.0	18.0
HSDH0530H-R68M	0.68	$\pm 20\%$	100	1000	7.3	8.8	9.0	10.0	13.0	14.5
HSDH0530H-R82M	0.82	$\pm 20\%$	100	1000	9.2	12.0	8.5	9.0	12.0	13.0
HSDH0530H-1R0M	1.0	$\pm 20\%$	100	1000	11.0	14.0	8.3	8.8	11.0	12.0
HSDH0530H-1R2M	1.2	$\pm 20\%$	100	1000	11.0	14.0	8.3	8.8	10.5	11.0
HSDH0530H-1R5M	1.5	$\pm 20\%$	100	1000	15.5	19.0	7.5	8.0	10.0	10.5
HSDH0530H-2R2M	2.2	$\pm 20\%$	100	1000	25.0	32.0	5.0	5.5	8.5	9.0
HSDH0530H-3R3M	3.3	$\pm 20\%$	100	1000	34.0	42.0	4.5	4.8	7.0	8.0
HSDH0530H-4R7M	4.7	$\pm 20\%$	100	1000	47.0	57.0	4.2	4.5	5.0	6.0
HSDH0530H-5R6M	5.6	$\pm 20\%$	100	1000	60.0	66.0	3.0	3.2	6.0	6.5
HSDH0530H-6R8M	6.8	$\pm 20\%$	100	1000	70.0	77.0	2.8	3.0	4.0	5.0
HSDH0530H-6R8M01	6.8	$\pm 20\%$	100	1000	60.0	66.0	3.0	3.2	4.5	5.0
HSDH0530H-8R2M	8.2	$\pm 20\%$	100	1000	96.0	106.0	2.5	2.8	4.5	5.0

电性能参数 Electrical Characteristic List (0530系列)

型号规格 Part NO.	标称感量 Inductance (μH)	精度级别 Accuracy Grade	测试频率 Test Frequency (KHz)	测试电压 Test Voltage (mV)	直流电阻 Rdc ($\text{m}\Omega$)		额定电流 Idc (A)		饱和电流 Isat (A)	
					Typ	Max	Max	Typ	Max	Typ
HSDH0530H-100M	10	$\pm 20\%$	100	1000	124.0	138.0	2.0	2.2	3.5	3.7
HSDH0530H-150M	15	$\pm 20\%$	100	1000	192.0	212.0	1.8	2.0	2.8	3.0
HSDH0530H-220M	22	$\pm 20\%$	100	1000	230.0	253.0	1.3	1.5	2.3	2.5
HSDH0530H-330M	33	$\pm 20\%$	100	1000	350.0	385.0	1.0	1.2	1.8	2.0

电性能参数 Electrical Characteristic List (0540系列)

型号规格 Part NO.	标称感量 Inductance (μH)	精度级别 Accuracy Grade	测试频率 Test Frequency (KHz)	测试电压 Test Voltage (mV)	直流电阻 Rdc ($\text{m}\Omega$)		额定电流 Idc (A)		饱和电流 Isat (A)	
					Typ	Max	Max	Typ	Max	Typ
HSDH0540H-R68M	0.68	$\pm 20\%$	100	1000	9.0	11.0	7.0	8.0	13.0	14.0
HSDH0540H-2R2M	2.2	$\pm 20\%$	100	1000	18.0	22.0	6.0	7.0	7.5	8.0
HSDH0540H-4R7M	4.7	$\pm 20\%$	100	1000	42.0	52.0	4.0	4.2	6.0	6.5
HSDH0540H-100M	10	$\pm 20\%$	100	1000	92.0	103.0	2.5	2.8	4.5	5.0
HSDH0540H-150M	15	$\pm 20\%$	100	1000	140.0	154.0	2.0	2.2	2.8	3.0
HSDH0540H-220M	22	$\pm 20\%$	100	1000	198.0	218.0	1.5	1.8	2.3	2.5
HSDH0540H-330M	33	$\pm 20\%$	100	1000	295.0	325.0	1.2	1.3	2.3	2.5

电性能参数 Electrical Characteristic List (0615系列)

型号规格 Part NO.	标称感量 Inductance (μH)	精度级别 Accuracy Grade	测试频率 Test Frequency (KHz)	测试电压 Test Voltage (mV)	直流电阻 Rdc ($\text{m}\Omega$)		额定电流 Idc (A)		饱和电流 Isat (A)	
					Typ	Max	Max	Typ	Max	Typ
HSDH0615H-R68M	0.68	$\pm 20\%$	100	1000	10.0	12.0	9.0	10.0	11.0	12.0
HSDH0615H-1R0M	1.0	$\pm 20\%$	100	1000	18.0	22.0	7.8	8.2	8.5	9.0
HSDH0615H-1R5M	1.5	$\pm 20\%$	100	1000	28.5	35.0	6.2	6.5	7.5	8.0
HSDH0615H-2R2M	2.2	$\pm 20\%$	100	1000	46.0	56.0	4.0	4.5	5.5	6.0
HSDH0615H-4R7M	4.7	$\pm 20\%$	100	1000	80.0	88.0	3.5	4.0	4.5	5.0

电性能参数 Electrical Characteristic List (0618系列)

型号规格 Part NO.	标称感量 Inductance (μH)	精度级别 Accuracy Grade	测试频率 Test Frequency (KHz)	测试电压 Test Voltage (mV)	直流电阻 Rdc ($\text{m}\Omega$)		额定电流 Idc (A)		饱和电流 Isat (A)	
					Typ	Max	Max	Typ	Max	Typ
HSDH0618H-R10N	0.10	$\pm 30\%$	100	1000	2.2	2.7	22.0	24.0	28.0	30.0
HSDH0618H-R15M	0.15	$\pm 20\%$	100	1000	2.2	2.7	20.0	22.0	28.0	30.0
HSDH0618H-R22M	0.22	$\pm 20\%$	100	1000	3.5	4.5	14.0	15.0	23.0	25.0
HSDH0618H-R33M	0.33	$\pm 20\%$	100	1000	4.0	5.0	13.0	14.0	22.0	24.0

电性能参数 Electrical Characteristic List (0618系列)

型号规格 Part NO.	标称感量 Inductance (μ H)	精度级别 Accuracy Grade	测试频率 Test Frequency (KHz)	测试电压 Test Voltage (mV)	直流电阻 Rdc ($m\Omega$)		额定电流 Idc (A)		饱和电流 Isat (A)	
					Typ	Max	Max	Typ	Max	Typ
HSDH0618H-R47M	0.47	$\pm 20\%$	100	1000	7.0	8.5	10.5	11.5	18.0	20.0
HSDH0618H-R68M	0.68	$\pm 20\%$	100	1000	10.0	12.0	9.0	10.0	15.0	16.0
HSDH0618H-1R0M	1.0	$\pm 20\%$	100	1000	15.0	18.0	7.5	8.0	11.0	12.0
HSDH0618H-1R5M	1.5	$\pm 20\%$	100	1000	24.0	30.0	6.5	7.0	9.0	10.0
HSDH0618H-1R5M02	1.5	$\pm 20\%$	100	1000	21.0	26.0	7.0	7.5	10.5	11.0
HSDH0618H-2R2M	2.2	$\pm 20\%$	100	1000	34.0	42.0	4.5	5.0	7.5	8.0
HSDH0618H-3R3M	3.3	$\pm 20\%$	100	1000	47.0	58.0	4.0	4.5	6.5	7.0
HSDH0618H-4R7M	4.7	$\pm 20\%$	100	1000	65.0	72.0	3.8	4.0	5.0	5.5
HSDH0618H-6R8M	6.8	$\pm 20\%$	100	1000	94.0	104.0	3.0	3.2	4.2	4.5
HSDH0618H-100M	10	$\pm 20\%$	100	1000	149.0	165.0	2.1	2.3	3.4	3.7

电性能参数 Electrical Characteristic List (0620系列)

型号规格 Part NO.	标称感量 Inductance (μ H)	精度级别 Accuracy Grade	测试频率 Test Frequency (KHz)	测试电压 Test Voltage (mV)	直流电阻 Rdc ($m\Omega$)		额定电流 Idc (A)		饱和电流 Isat (A)	
					Typ	Max	Max	Typ	Max	Typ
HSDH0620H-R10N	0.10	$\pm 30\%$	100	1000	2.0	2.6	22.0	24.0	32.0	35.0
HSDH0620H-R15M	0.15	$\pm 20\%$	100	1000	2.2	2.8	20.0	22.0	28.0	30.0
HSDH0620H-R22M	0.22	$\pm 20\%$	100	1000	2.9	3.5	16.0	18.0	23.0	25.0
HSDH0620H-R33M	0.33	$\pm 20\%$	100	1000	4.5	5.4	14.0	16.0	22.0	24.0
HSDH0620H-R47M	0.47	$\pm 20\%$	100	1000	6.8	8.2	12.0	14.0	18.0	20.0
HSDH0620H-R68M	0.68	$\pm 20\%$	100	1000	9.5	12.0	9.0	10.0	16.0	17.0
HSDH0620H-R82M	0.82	$\pm 20\%$	100	1000	16.5	20.0	8.0	9.0	13.0	14.0
HSDH0620H-1R0M	1.0	$\pm 20\%$	100	1000	16.5	20.0	8.0	9.0	13.0	14.0
HSDH0620H-1R5M	1.5	$\pm 20\%$	100	1000	20.5	26.0	6.0	6.5	11.0	12.0
HSDH0620H-2R2M	2.2	$\pm 20\%$	100	1000	30.0	36.0	5.0	5.5	8.5	9.0
HSDH0620H-3R3M	3.3	$\pm 20\%$	100	1000	44.0	54.0	4.0	4.5	6.5	7.0
HSDH0620H-4R7M	4.7	$\pm 20\%$	100	1000	89.0	100.0	3.5	3.8	6.0	6.5
HSDH0620H-6R8M	6.8	$\pm 20\%$	100	1000	96.0	108.0	3.0	3.2	3.5	4.0
HSDH0620H-100M	10	$\pm 20\%$	100	1000	155.0	172.0	2.0	2.2	3.0	3.5

电性能参数 Electrical Characteristic List (0624系列)

型号规格 Part NO.	标称感量 Inductance (μ H)	精度级别 Accuracy Grade	测试频率 Test Frequency (KHz)	测试电压 Test Voltage (mV)	直流电阻 Rdc ($m\Omega$)		额定电流 Idc (A)		饱和电流 Isat (A)	
					Typ	Max	Max	Typ	Max	Typ
HSDH0624H-R10N	0.10	$\pm 30\%$	100	1000	1.8	2.2	24.0	26.0	38.0	40.0
HSDH0624H-R15M	0.15	$\pm 20\%$	100	1000	1.9	2.3	22.0	24.0	40.0	42.0
HSDH0624H-R22M	0.22	$\pm 20\%$	100	1000	2.7	3.6	20.0	21.0	32.0	34.0
HSDH0624H-R36M	0.36	$\pm 20\%$	100	1000	4.5	5.5	15.0	17.0	20.0	22.0
HSDH0624H-R47M	0.47	$\pm 20\%$	100	1000	5.0	6.2	13.0	15.0	17.0	18.0
HSDH0624H-R68M	0.68	$\pm 20\%$	100	1000	7.0	8.6	12.5	13.5	17.0	18.0
HSDH0624H-1R0M	1.0	$\pm 20\%$	100	1000	11.0	13.5	10.0	11.0	14.0	15.0
HSDH0624H-1R5M	1.5	$\pm 20\%$	100	1000	16.0	20.0	8.0	8.5	12.0	13.0
HSDH0624H-2R2M	2.2	$\pm 20\%$	100	1000	25.0	32.0	6.0	6.5	9.0	10.0
HSDH0624H-3R3M	3.3	$\pm 20\%$	100	1000	34.0	42.0	5.0	5.5	8.5	9.0
HSDH0624H-4R7M	4.7	$\pm 20\%$	100	1000	41.0	50.0	4.5	5.0	6.5	7.0
HSDH0624H-5R6M	5.6	$\pm 20\%$	100	1000	52.0	60.0	4.2	4.5	6.0	6.5
HSDH0624H-6R8M	6.8	$\pm 20\%$	100	1000	64.0	72.0	4.0	4.2	6.0	6.5
HSDH0624H-6R8M01	6.8	$\pm 20\%$	100	1000	60.0	66.0	5.0	5.2	5.5	6.0
HSDH0624H-8R2M	8.2	$\pm 20\%$	100	1000	70.0	77.0	3.8	4.0	5.0	5.5
HSDH0624H-100M	10	$\pm 20\%$	100	1000	92.0	102.0	2.8	3.1	4.5	5.0
HSDH0624H-150M	15	$\pm 20\%$	100	1000	145.0	160.0	2.5	2.6	3.3	3.5
HSDH0624H-220M	22	$\pm 20\%$	100	1000	175.0	195.0	2.2	2.4	2.5	3.0

电性能参数 Electrical Characteristic List (0628系列)

型号规格 Part NO.	标称感量 Inductance (μ H)	精度级别 Accuracy Grade	测试频率 Test Frequency (KHz)	测试电压 Test Voltage (mV)	直流电阻 Rdc ($m\Omega$)		额定电流 Idc (A)		饱和电流 Isat (A)	
					Typ	Max	Max	Typ	Max	Typ
HSDH0628H-1R0M	1.0	$\pm 20\%$	100	1000	8.5	11.0	11.0	12.0	14.0	15.0
HSDH0628H-1R5M	1.5	$\pm 20\%$	100	1000	10.0	12.5	10.0	11.0	12.0	13.0

电性能参数 Electrical Characteristic List (0630系列)

型号规格 Part NO.	标称感量 Inductance (μ H)	精度级别 Accuracy Grade	测试频率 Test Frequency (KHz)	测试电压 Test Voltage (mV)	直流电阻 Rdc ($m\Omega$)		额定电流 Idc (A)		饱和电流 Isat (A)	
					Typ	Max	Max	Typ	Max	Typ
HSDH0630H-R10N	0.10	$\pm 30\%$	100	1000	1.6	2.0	29.0	32.0	45.0	50.0
HSDH0630H-R15M	0.15	$\pm 20\%$	100	1000	1.6	2.0	29.0	32.0	45.0	50.0
HSDH0630H-R15M01	0.15	$\pm 20\%$	100	1000	0.8	1.0	35.0	37.0	45.0	50.0
HSDH0630H-R22M	0.22	$\pm 20\%$	100	1000	2.2	2.8	24.0	25.0	32.0	35.0
HSDH0630H-R22M01	0.22	$\pm 20\%$	100	1000	1.8	2.4	25.0	28.0	40.0	45.0
HSDH0630H-R36M	0.36	$\pm 20\%$	100	1000	3.3	4.0	19.0	20.0	28.0	30.0
HSDH0630H-R47M	0.47	$\pm 20\%$	100	1000	3.5	4.2	18.0	19.0	21.0	24.0
HSDH0630H-R56M	0.56	$\pm 20\%$	100	1000	4.0	5.0	17.0	18.0	20.0	22.0
HSDH0630H-R68M	0.68	$\pm 20\%$	100	1000	4.8	6.0	15.0	16.0	18.0	20.0
HSDH0630H-R82M	0.82	$\pm 20\%$	100	1000	5.6	7.0	13.5	14.0	18.0	20.0
HSDH0630H-1R0M	1.0	$\pm 20\%$	100	1000	8.5	11.0	12.0	12.5	15.5	16.0
HSDH0630H-1R0M01	1.0	$\pm 20\%$	100	1000	6.9	8.4	13.0	13.5	14.0	15.0
HSDH0630H-1R5M	1.5	$\pm 20\%$	100	1000	10.0	12.0	11.5	12.0	13.0	14.0
HSDH0630H-1R5M01	1.5	$\pm 20\%$	100	1000	8.1	10.0	12.5	13.5	14.0	15.0
HSDH0630H-2R2M	2.2	$\pm 20\%$	100	1000	14.5	18.0	8.0	9.0	11.0	12.0
HSDH0630H-2R2M01	2.2	$\pm 20\%$	100	1000	12.0	15.0	9.0	10.0	11.0	11.5
HSDH0630H-2R7M	2.7	$\pm 20\%$	100	1000	16.0	20.0	8.0	8.5	11.0	12.0
HSDH0630H-3R3M	3.3	$\pm 20\%$	100	1000	24.5	30.0	6.2	6.5	9.0	10.0
HSDH0630H-3R3M01	3.3	$\pm 20\%$	100	1000	18.0	22.0	8.0	8.5	9.0	10.0
HSDH0630H-4R7M	4.7	$\pm 20\%$	100	1000	32.4	40.0	6.0	6.2	8.5	9.0
HSDH0630H-4R7M01	4.7	$\pm 20\%$	100	1000	31.0	38.0	6.3	6.5	8.5	9.0
HSDH0630H-5R6M	5.6	$\pm 20\%$	100	1000	42.0	52.0	4.8	5.0	7.5	8.0
HSDH0630H-6R8M	6.8	$\pm 20\%$	100	1000	63.0	70.0	3.6	3.8	6.5	7.0
HSDH0630H-6R8M01	6.8	$\pm 20\%$	100	1000	45.0	54.0	4.5	5.0	7.0	8.0
HSDH0630H-8R2M	8.2	$\pm 20\%$	100	1000	63.0	70.0	3.6	3.8	5.6	6.0
HSDH0630H-8R2M01	8.2	$\pm 20\%$	100	1000	54.0	60.0	4.2	4.5	5.6	6.0
HSDH0630H-100M	10	$\pm 20\%$	100	1000	80.0	100.0	3.5	3.8	5.3	5.5
HSDH0630H-100M01	10	$\pm 20\%$	100	1000	61.0	68.0	3.8	4.0	4.5	5.0
HSDH0630H-150M	15	$\pm 20\%$	100	1000	105.0	130.0	3.0	3.2	3.7	4.0
HSDH0630H-220M	22	$\pm 20\%$	100	1000	140.0	165.0	2.3	2.5	3.2	3.5
HSDH0630H-220M01	22	$\pm 20\%$	100	1000	125.0	140.0	2.5	2.8	3.2	3.5
HSDH0630H-330M	33	$\pm 20\%$	100	1000	210.0	245.0	2.0	2.2	2.3	2.5
HSDH0630H-470M	47	$\pm 20\%$	100	1000	320.0	355.0	1.5	1.8	1.8	2.0

电性能参数 Electrical Characteristic List (0640系列)

型号规格 Part NO.	标称感量 Inductance (μH)	精度级别 Accuracy Grade	测试频率 Test Frequency (KHz)	测试电压 Test Voltage (mV)	直流电阻 Rdc ($\text{m}\Omega$)		额定电流 Idc (A)		饱和电流 Isat (A)	
					Typ	Max	Max	Typ	Max	Typ
HSDH0640H-R36M	0.36	$\pm 20\%$	100	1000	3.1	3.8	18.0	19.0	26.0	28.0
HSDH0640H-R68M	0.68	$\pm 20\%$	100	1000	4.0	5.0	17.0	18.0	18.0	19.0
HSDH0640H-1R0M	1.0	$\pm 20\%$	100	1000	5.2	6.4	13.0	14.0	15.0	16.0
HSDH0640H-1R5M	1.5	$\pm 20\%$	100	1000	7.2	8.8	12.0	13.0	13.5	15.0
HSDH0640H-2R2M	2.2	$\pm 20\%$	100	1000	9.5	12.0	10.5	11.5	13.0	14.0
HSDH0640H-3R3M	3.3	$\pm 20\%$	100	1000	15.0	18.0	8.0	9.0	11.0	12.5
HSDH0640H-4R7M	4.7	$\pm 20\%$	100	1000	22.0	27.0	7.0	8.0	9.0	10.0
HSDH0640H-6R8M	6.8	$\pm 20\%$	100	1000	41.5	50.0	5.0	5.5	7.0	8.0
HSDH0640H-100M	10	$\pm 20\%$	100	1000	56.0	62.0	4.5	5.0	5.0	5.5
HSDH0640H-150M	15	$\pm 20\%$	100	1000	74.0	82.0	3.5	4.0	4.5	5.0
HSDH0640H-220M	22	$\pm 20\%$	100	1000	120.0	134.0	3.0	3.5	3.5	4.0
HSDH0640H-330M	33	$\pm 20\%$	100	1000	210.0	235.0	2.0	2.2	3.0	3.5
HSDH0640H-330M01	33	$\pm 20\%$	100	1000	154.0	175.0	2.2	2.5	3.0	3.5
HSDH0640H-470M	47	$\pm 20\%$	100	1000	230.0	255.0	1.8	2.0	2.5	3.0

电性能参数 Electrical Characteristic List (0650系列)

型号规格 Part NO.	标称感量 Inductance (μH)	精度级别 Accuracy Grade	测试频率 Test Frequency (KHz)	测试电压 Test Voltage (mV)	直流电阻 Rdc ($\text{m}\Omega$)		额定电流 Idc (A)		饱和电流 Isat (A)	
					Typ	Max	Max	Typ	Max	Typ
HSDH0650H-R22M	0.22	$\pm 20\%$	100	1000	1.9	2.3	28.0	30.0	38.0	40.0
HSDH0650H-R36M	0.36	$\pm 20\%$	100	1000	2.4	3.0	20.0	21.0	24.0	26.0
HSDH0650H-R47M	0.47	$\pm 20\%$	100	1000	2.8	3.5	19.0	20.0	20.0	22.0
HSDH0650H-R56M	0.56	$\pm 20\%$	100	1000	3.4	4.2	18.0	19.0	19.0	20.0
HSDH0650H-R68M	0.68	$\pm 20\%$	100	1000	4.0	5.0	17.0	18.0	17.0	18.0
HSDH0650H-1R0M	1.0	$\pm 20\%$	100	1000	5.2	6.3	13.0	14.0	15.0	16.0
HSDH0650H-1R5M	1.5	$\pm 20\%$	100	1000	7.2	8.8	12.0	13.0	13.0	14.0
HSDH0650H-2R2M	2.2	$\pm 20\%$	100	1000	10.0	12.0	10.0	11.0	11.0	12.0
HSDH0650H-3R3M	3.3	$\pm 20\%$	100	1000	13.8	18.0	9.0	10.0	10.0	11.0
HSDH0650H-4R7M	4.7	$\pm 20\%$	100	1000	18.5	24.0	8.0	9.0	9.0	10.0
HSDH0650H-5R6M	5.6	$\pm 20\%$	100	1000	25.0	32.0	7.0	7.5	8.0	9.0
HSDH0650H-6R8M	6.8	$\pm 20\%$	100	1000	27.0	35.0	6.5	7.0	7.5	8.0
HSDH0650H-8R2M	8.2	$\pm 20\%$	100	1000	38.0	46.0	6.0	6.5	7.0	7.5
HSDH0650H-100M	10	$\pm 20\%$	100	1000	45.0	55.0	5.0	5.5	6.5	7.0
HSDH0650H-150M	15	$\pm 20\%$	100	1000	60.0	66.0	4.5	5.0	5.5	6.0
HSDH0650H-220M	22	$\pm 20\%$	100	1000	115.0	128.0	3.0	3.5	3.5	4.0

电性能参数 Electrical Characteristic List (0650系列)

型号规格 Part NO.	标称感量 Inductance (μ H)	精度级别 Accuracy Grade	测试频率 Test Frequency (KHz)	测试电压 Test Voltage (mV)	直流电阻 Rdc ($m\Omega$)		额定电流 Idc (A)		饱和电流 Isat (A)	
					Typ	Max	Max	Typ	Max	Typ
HSDH0650H-220M01	22	$\pm 20\%$	100	1000	90.0	100.0	3.2	3.8	3.5	4.0
HSDH0650H-330M	33	$\pm 20\%$	100	1000	154.0	172.0	2.2	2.5	3.0	3.5
HSDH0650H-330M01	33	$\pm 20\%$	100	1000	140.0	155.0	2.5	3.0	3.5	4.0
HSDH0650H-470M	47	$\pm 20\%$	100	1000	230.0	255.0	1.8	2.0	2.5	3.0
HSDH0650H-680M	68	$\pm 20\%$	100	1000	320.0	355.0	1.0	1.2	1.8	2.1
HSDH0650H-680M02	68	$\pm 20\%$	100	1000	265.0	295.0	1.5	2.0	2.2	2.5
HSDH0650H-101M	100	$\pm 20\%$	100	1000	485.0	535.0	0.8	1.0	1.5	1.8

电性能参数 Electrical Characteristic List (0830系列)

型号规格 Part NO.	标称感量 Inductance (μ H)	精度级别 Accuracy Grade	测试频率 Test Frequency (KHz)	测试电压 Test Voltage (mV)	直流电阻 Rdc ($m\Omega$)		额定电流 Idc (A)		饱和电流 Isat (A)	
					Typ	Max	Max	Typ	Max	Typ
HSDH0830H-R33M	0.33	$\pm 20\%$	100	1000	2.5	3.0	20.0	21.0	28.0	30.0
HSDH0830H-R47M	0.47	$\pm 20\%$	100	1000	3.1	3.8	19.0	20.0	28.0	30.0
HSDH0830H-R68M	0.68	$\pm 20\%$	100	1000	3.6	4.4	18.0	19.0	24.0	26.0
HSDH0830H-R82M	0.82	$\pm 20\%$	100	1000	5.2	6.3	13.0	14.0	20.0	22.0
HSDH0830H-1R0M	1.0	$\pm 20\%$	100	1000	5.2	6.5	13.0	14.0	18.0	20.0
HSDH0830H-1R5M	1.5	$\pm 20\%$	100	1000	6.3	7.6	12.0	13.0	15.0	16.0
HSDH0830H-2R2M	2.2	$\pm 20\%$	100	1000	10.0	12.0	10.0	11.0	13.0	14.0
HSDH0830H-3R3M	3.3	$\pm 20\%$	100	1000	15.0	18.0	8.0	9.5	9.0	10.0
HSDH0830H-4R7M	4.7	$\pm 20\%$	100	1000	24.0	30.0	7.0	8.0	9.0	10.0
HSDH0830H-5R6M	5.6	$\pm 20\%$	100	1000	30.0	38.0	6.0	7.0	7.0	8.0
HSDH0830H-6R8M	6.8	$\pm 20\%$	100	1000	45.0	55.0	5.0	6.0	8.0	9.0
HSDH0830H-100M	10	$\pm 20\%$	100	1000	54.0	60.0	4.8	5.5	6.0	6.5
HSDH0830H-150M	15	$\pm 20\%$	100	1000	90.0	100.0	3.5	4.0	4.5	5.0
HSDH0830H-220M	22	$\pm 20\%$	100	1000	100.0	110.0	3.0	3.8	4.0	4.5
HSDH0830H-330M	33	$\pm 20\%$	100	1000	155.0	172.0	2.0	2.5	3.0	3.5
HSDH0830H-470M	47	$\pm 20\%$	100	1000	260.0	288.0	1.5	2.0	2.0	2.5

电性能参数 Electrical Characteristic List (0840系列)

型号规格 Part NO.	标称感量 Inductance (μ H)	精度级别 Accuracy Grade	测试频率 Test Frequency (KHz)	测试电压 Test Voltage (mV)	直流电阻 Rdc (m Ω)		额定电流 Idc (A)		饱和电流 Isat (A)	
					Typ	Max	Max	Typ	Max	Typ
HSDH0840H-1R0M	1.0	\pm 20%	100	1000	4.1	5.0	16.0	17.0	18.0	20.0
HSDH0840H-2R2M	2.2	\pm 20%	100	1000	9.5	12.0	10.5	11.5	15.0	16.0
HSDH0840H-3R3M	3.3	\pm 20%	100	1000	12.0	15.0	9.0	10.0	11.0	12.0
HSDH0840H-6R8M	6.8	\pm 20%	100	1000	29.0	35.0	6.0	7.0	9.0	10.0
HSDH0840H-8R2M	8.2	\pm 20%	100	1000	42.0	52.0	5.0	6.5	7.0	8.0
HSDH0840H-100M	10	\pm 20%	100	1000	42.0	52.0	5.0	6.5	7.0	8.0
HSDH0840H-220M	22	\pm 20%	100	1000	93.0	108.0	3.5	4.2	5.0	5.5
HSDH0840H-470M	47	\pm 20%	100	1000	155.0	180.0	2.0	2.5	2.5	3.0

电性能参数 Electrical Characteristic List (0850系列)

型号规格 Part NO.	标称感量 Inductance (μ H)	精度级别 Accuracy Grade	测试频率 Test Frequency (KHz)	测试电压 Test Voltage (mV)	直流电阻 Rdc (m Ω)		额定电流 Idc (A)		饱和电流 Isat (A)	
					Typ	Max	Max	Typ	Max	Typ
HSDH0850H-R22M	0.22	\pm 20%	100	1000	1.8	2.2	25.0	26.0	53.0	55.0
HSDH0850H-R22M01	0.22	\pm 20%	100	1000	0.6	0.8	30.0	32.0	53.0	55.0
HSDH0850H-R47M	0.47	\pm 20%	100	1000	2.5	2.9	22.0	23.0	28.0	30.0
HSDH0850H-R68M	0.68	\pm 20%	100	1000	3.6	4.4	18.0	19.0	23.0	25.0
HSDH0850H-R82M	0.82	\pm 20%	100	1000	4.0	4.8	17.0	18.0	23.0	24.0
HSDH0850H-1R0M	1.0	\pm 20%	100	1000	4.1	5.0	16.0	17.0	19.0	20.0
HSDH0850H-1R5M	1.5	\pm 20%	100	1000	4.9	6.0	14.0	15.0	19.0	20.0
HSDH0850H-1R8M	1.8	\pm 20%	100	1000	7.5	9.0	13.0	14.0	17.0	18.0
HSDH0850H-2R2M	2.2	\pm 20%	100	1000	8.2	10.0	11.0	12.0	15.0	16.0
HSDH0850H-2R2M02	2.2	\pm 20%	100	1000	8.2	10.0	11.0	12.0	15.0	16.0
HSDH0850H-3R3M	3.3	\pm 20%	100	1000	11.0	13.5	10.0	10.5	12.0	13.0
HSDH0850H-4R7M	4.7	\pm 20%	100	1000	15.0	18.0	8.5	9.5	11.0	12.0
HSDH0850H-5R6M	5.6	\pm 20%	100	1000	19.8	24.0	8.0	9.0	12.0	13.0
HSDH0850H-6R8M	6.8	\pm 20%	100	1000	20.0	25.0	8.0	9.0	10.0	11.0
HSDH0850H-100M	10	\pm 20%	100	1000	35.0	42.0	6.0	6.5	7.0	8.0
HSDH0850H-150M	15	\pm 20%	100	1000	47.0	58.0	5.0	6.0	6.5	7.0
HSDH0850H-220M	22	\pm 20%	100	1000	74.0	84.0	4.0	4.5	5.0	5.5
HSDH0850H-330M	33	\pm 20%	100	1000	120.0	135.0	2.5	3.5	4.5	5.0
HSDH0850H-470M	47	\pm 20%	100	1000	177.0	195.0	2.0	2.5	3.0	3.5
HSDH0850H-560M	56	\pm 20%	100	1000	170.0	190.0	2.2	2.5	3.0	3.5
HSDH0850H-680M	68	\pm 20%	100	1000	235.0	260.0	1.5	2.0	2.5	3.0
HSDH0850H-101M	100	\pm 20%	100	1000	272.0	300.0	1.0	1.5	2.0	2.5

电性能参数 Electrical Characteristic List (1030系列)

型号规格 Part NO.	标称感量 Inductance (μH)	精度级别 Accuracy Grade	测试频率 Test Frequency (KHz)	测试电压 Test Voltage (mV)	直流电阻 Rdc ($\text{m}\Omega$)		额定电流 Idc (A)		饱和电流 Isat (A)	
					Typ	Max	Max	Typ	Max	Typ
HSDH1030H-R22M	0.22	$\pm 20\%$	100	1000	0.7	0.9	30.0	32.0	40.0	41.0
HSDH1030H-R56M	0.56	$\pm 20\%$	100	1000	3.1	3.8	19.0	22.0	28.0	30.0
HSDH1030H-1R0M	1.0	$\pm 20\%$	100	1000	6.4	7.8	13.0	14.0	22.0	24.0
HSDH1030H-2R2M	2.2	$\pm 20\%$	100	1000	11.0	13.5	9.0	10.0	15.0	16.0
HSDH1030H-3R3M	3.3	$\pm 20\%$	100	1000	16.5	20.0	7.0	8.0	13.0	14.0
HSDH1030H-4R7M	4.7	$\pm 20\%$	100	1000	25.0	30.0	5.5	6.0	10.5	12.0
HSDH1030H-6R8M	6.8	$\pm 20\%$	100	1000	42.0	52.0	5.0	5.2	9.0	10.0
HSDH1030H-8R2M	8.2	$\pm 20\%$	100	1000	49.0	60.0	4.8	5.0	8.5	9.0
HSDH1030H-100M	10	$\pm 20\%$	100	1000	53.5	62.0	4.5	5.0	7.0	8.0
HSDH1030H-220M	22	$\pm 20\%$	100	1000	93.0	105.0	3.0	3.5	5.5	6.0
HSDH1030H-330M	33	$\pm 20\%$	100	1000	125.0	140.0	2.0	2.5	3.5	4.0

电性能参数 Electrical Characteristic List (1040系列)

型号规格 Part NO.	标称感量 Inductance (μH)	精度级别 Accuracy Grade	测试频率 Test Frequency (KHz)	测试电压 Test Voltage (mV)	直流电阻 Rdc ($\text{m}\Omega$)		额定电流 Idc (A)		饱和电流 Isat (A)	
					Typ	Max	Max	Typ	Max	Typ
HSDH1040H-R15M	0.15	$\pm 20\%$	100	1000	0.4	0.6	42.0	45.0	70.0	75.0
HSDH1040H-R19M	0.19	$\pm 20\%$	100	1000	0.6	0.8	35.0	37.0	60.0	65.0
HSDH1040H-R22M	0.22	$\pm 20\%$	100	1000	0.6	0.8	35.0	37.0	55.0	60.0
HSDH1040H-R36M	0.36	$\pm 20\%$	100	1000	1.0	1.5	28.0	30.0	35.0	38.0
HSDH1040H-R36M01	0.36	$\pm 20\%$	100	1000	0.9	1.2	30.0	32.0	45.0	50.0
HSDH1040H-R47M	0.47	$\pm 20\%$	100	1000	1.2	1.5	26.0	27.0	30.0	35.0
HSDH1040H-R56M	0.56	$\pm 20\%$	100	1000	1.7	2.3	24.0	25.0	30.0	34.0
HSDH1040H-R68M	0.68	$\pm 20\%$	100	1000	2.0	2.4	22.0	23.0	30.0	32.0
HSDH1040H-R82M	0.82	$\pm 20\%$	100	1000	2.0	2.5	20.0	21.0	28.0	30.0
HSDH1040H-1R0M	1.0	$\pm 20\%$	100	1000	3.4	4.1	16.0	17.0	27.0	28.0
HSDH1040H-1R0M01	1.0	$\pm 20\%$	100	1000	2.4	3.0	18.0	19.0	27.0	28.0
HSDH1040H-1R5M	1.5	$\pm 20\%$	100	1000	4.8	6.3	14.0	15.0	19.0	20.0
HSDH1040H-2R2M	2.2	$\pm 20\%$	100	1000	6.5	8.0	11.0	13.0	18.0	19.0
HSDH1040H-2R2M02	2.2	$\pm 20\%$	100	1000	6.8	9.0	11.0	13.0	21.0	22.0
HSDH1040H-3R3M	3.3	$\pm 20\%$	100	1000	9.0	11.0	11.0	12.0	16.0	17.0
HSDH1040H-4R7M	4.7	$\pm 20\%$	100	1000	14.0	17.0	8.5	9.0	14.5	15.0
HSDH1040H-6R8M	6.8	$\pm 20\%$	100	1000	18.0	22.0	8.0	8.5	10.0	11.0
HSDH1040H-8R2M	8.2	$\pm 20\%$	100	1000	26.0	33.0	7.0	7.2	10.0	11.0
HSDH1040H-100M	10	$\pm 20\%$	100	1000	31.0	38.0	6.0	6.5	8.5	9.0

电性能参数 Electrical Characteristic List (1040系列)

型号规格 Part NO.	标称感量 Inductance (μH)	精度级别 Accuracy Grade	测试频率 Test Frequency (KHz)	测试电压 Test Voltage (mV)	直流电阻 Rdc ($\text{m}\Omega$)		额定电流 Idc (A)		饱和电流 Isat (A)	
					Typ	Max	Max	Typ	Max	Typ
HSDH1040H-100M01	10	$\pm 20\%$	100	1000	28.5	35.0	6.5	7.0	8.5	9.0
HSDH1040H-150M	15	$\pm 20\%$	100	1000	50.0	56.0	5.0	5.5	7.5	8.0
HSDH1040H-220M	22	$\pm 20\%$	100	1000	63.5	70.0	4.5	5.0	6.5	7.0
HSDH1040H-330M	33	$\pm 20\%$	100	1000	89.0	100.0	3.6	4.0	5.0	6.0
HSDH1040H-330M01	33	$\pm 20\%$	100	1000	84.0	95.0	4.0	4.9	4.6	5.5
HSDH1040H-390M	39	$\pm 20\%$	100	1000	120.0	132.0	3.0	3.5	4.0	5.0
HSDH1040H-470M	47	$\pm 20\%$	100	1000	130.0	143.0	3.0	3.3	4.5	5.0
HSDH1040H-680M	68	$\pm 20\%$	100	1000	203.0	223.0	2.1	2.3	3.5	4.0
HSDH1040H-820M	82	$\pm 20\%$	100	1000	240.0	264.0	1.9	2.1	3.0	3.5
HSDH1040H-101M	100	$\pm 20\%$	100	1000	330.0	363.0	1.8	2.0	2.8	3.0

电性能参数 Electrical Characteristic List (1045系列)

型号规格 Part NO.	标称感量 Inductance (μH)	精度级别 Accuracy Grade	测试频率 Test Frequency (KHz)	测试电压 Test Voltage (mV)	直流电阻 Rdc ($\text{m}\Omega$)		额定电流 Idc (A)		饱和电流 Isat (A)	
					Typ	Max	Max	Typ	Max	Typ
HSDH1045H-2R2M	2.2	$\pm 20\%$	100	1000	6.5	8.0	11.0	13.0	16.0	18.0
HSDH1045H-4R7M	4.7	$\pm 20\%$	100	1000	14.0	17.0	8.0	8.5	14.0	15.0
HSDH1045H-100M	10	$\pm 20\%$	100	1000	28.5	35.0	6.5	7.0	8.5	9.0
HSDH1045H-220M	22	$\pm 20\%$	100	1000	63.5	70.0	4.5	5.0	6.5	7.0
HSDH1045H-330M	33	$\pm 20\%$	100	1000	89.0	100.0	3.6	4.0	5.5	6.0
HSDH1045H-470M	47	$\pm 20\%$	100	1000	130.0	145.0	3.0	3.5	4.5	5.0
HSDH1045H-680M	68	$\pm 20\%$	100	1000	155.0	175.0	2.5	3.0	3.5	4.0
HSDH1045H-101M	100	$\pm 20\%$	100	1000	300.0	332.0	2.0	2.2	2.8	3.0

电性能参数 Electrical Characteristic List (1050系列)

型号规格 Part NO.	标称感量 Inductance (μH)	精度级别 Accuracy Grade	测试频率 Test Frequency (KHz)	测试电压 Test Voltage (mV)	直流电阻 Rdc ($\text{m}\Omega$)		额定电流 Idc (A)		饱和电流 Isat (A)	
					Typ	Max	Max	Typ	Max	Typ
HSDH1050H-R22M	0.22	$\pm 20\%$	100	1000	0.6	0.7	35.0	37.0	55.0	60.0
HSDH1050H-1R0M	1.0	$\pm 20\%$	100	1000	2.1	2.6	20.0	22.0	22.0	25.0
HSDH1050H-1R5M	1.5	$\pm 20\%$	100	1000	4.3	5.2	14.0	15.0	19.0	20.0
HSDH1050H-1R5M01	1.5	$\pm 20\%$	100	1000	2.9	3.5	19.0	20.0	23.0	24.0
HSDH1050H-2R2M	2.2	$\pm 20\%$	100	1000	5.0	6.0	12.0	14.0	21.0	22.0
HSDH1050H-2R2M01	2.2	$\pm 20\%$	100	1000	4.5	5.5	14.0	15.0	21.0	22.0
HSDH1050H-3R3M	3.3	$\pm 20\%$	100	1000	6.9	8.4	13.0	14.0	15.0	16.0

电性能参数 Electrical Characteristic List (1050系列)

型号规格 Part NO.	标称感量 Inductance (μH)	精度级别 Accuracy Grade	测试频率 Test Frequency (KHz)	测试电压 Test Voltage (mV)	直流电阻 Rdc ($\text{m}\Omega$)		额定电流 Idc (A)		饱和电流 Isat (A)	
					Typ	Max	Max	Typ	Max	Typ
HSDH1050H-4R7M	4.7	$\pm 20\%$	100	1000	12.0	15.0	8.5	10.0	14.0	15.0
HSDH1050H-6R8M	6.8	$\pm 20\%$	100	1000	19.4	25.0	8.0	8.5	13.0	14.0
HSDH1050H-8R2M	8.2	$\pm 20\%$	100	1000	25.4	32.0	7.0	7.2	12.0	13.0
HSDH1050H-100M	10	$\pm 20\%$	100	1000	25.5	32.0	7.0	7.2	11.0	12.0
HSDH1050H-150M	15	$\pm 20\%$	100	1000	36.0	45.0	5.8	6.2	9.0	10.0
HSDH1050H-220M	22	$\pm 20\%$	100	1000	58.0	65.0	5.5	6.0	7.0	8.0
HSDH1050H-330M	33	$\pm 20\%$	100	1000	76.0	85.0	4.0	4.5	5.0	6.0
HSDH1050H-470M	47	$\pm 20\%$	100	1000	110.0	125.0	3.0	3.5	4.5	5.0
HSDH1050H-560M	56	$\pm 20\%$	100	1000	148.0	165.0	2.7	3.0	4.5	5.0
HSDH1050H-680M	68	$\pm 20\%$	100	1000	155.0	175.0	2.3	2.5	4.0	4.5
HSDH1050H-820M	82	$\pm 20\%$	100	1000	215.0	240.0	1.8	2.0	3.0	3.5
HSDH1050H-101M	100	$\pm 20\%$	100	1000	240.0	265.0	2.6	3.0	3.8	4.0
HSDH1050H-101M02	100	$\pm 20\%$	100	1000	255.0	285.0	3.0	3.5	4.5	5.0

电性能参数 Electrical Characteristic List (1235系列)

型号规格 Part NO.	标称感量 Inductance (μH)	精度级别 Accuracy Grade	测试频率 Test Frequency (KHz)	测试电压 Test Voltage (mV)	直流电阻 Rdc ($\text{m}\Omega$)		额定电流 Idc (A)		饱和电流 Isat (A)	
					Typ	Max	Max	Typ	Max	Typ
HSDH1235H-R47M	0.47	$\pm 20\%$	100	1000	1.3	1.6	26.0	28.0	43.0	45.0
HSDH1235H-R68M	0.68	$\pm 20\%$	100	1000	2.0	2.4	23.0	24.0	38.0	40.0
HSDH1235H-1R0M	1.0	$\pm 20\%$	100	1000	2.9	3.5	17.0	18.0	34.0	36.0
HSDH1235H-1R5M	1.5	$\pm 20\%$	100	1000	4.4	5.3	15.0	16.0	28.0	30.0
HSDH1235H-2R2M	2.2	$\pm 20\%$	100	1000	5.0	6.0	14.0	15.0	18.0	20.0
HSDH1235H-3R3M	3.3	$\pm 20\%$	100	1000	11.5	14.0	10.0	11.0	16.0	18.0
HSDH1235H-100M	10	$\pm 20\%$	100	1000	35.0	45.0	6.0	6.5	7.0	8.0
HSDH1235H-220M	22	$\pm 20\%$	100	1000	65.0	75.0	4.5	5.0	6.5	7.0

电性能参数 Electrical Characteristic List (1240系列)

型号规格 Part NO.	标称感量 Inductance (μH)	精度级别 Accuracy Grade	测试频率 Test Frequency (KHz)	测试电压 Test Voltage (mV)	直流电阻 Rdc ($\text{m}\Omega$)		额定电流 Idc (A)		饱和电流 Isat (A)	
					Typ	Max	Max	Typ	Max	Typ
HSDH1240H-R47M	0.47	$\pm 20\%$	100	1000	1.3	1.6	26.0	28.0	43.0	45.0
HSDH1240H-R68M	0.68	$\pm 20\%$	100	1000	2.0	2.4	23.0	24.0	38.0	40.0
HSDH1240H-1R0M	1.0	$\pm 20\%$	100	1000	2.9	3.5	18.0	19.0	36.0	38.0
HSDH1240H-1R5M	1.5	$\pm 20\%$	100	1000	4.4	5.3	15.0	16.0	28.0	30.0

电性能参数 Electrical Characteristic List (1240系列)

型号规格 Part NO.	标称感量 Inductance (μ H)	精度级别 Accuracy Grade	测试频率 Test Frequency (KHz)	测试电压 Test Voltage (mV)	直流电阻 Rdc (m Ω)		额定电流 Idc (A)		饱和电流 Isat (A)	
					Typ	Max	Max	Typ	Max	Typ
HSDH1240H-2R2M	2.2	$\pm 20\%$	100	1000	5.0	6.0	14.0	15.0	18.0	20.0
HSDH1240H-3R3M	3.3	$\pm 20\%$	100	1000	11.5	14.0	11.0	12.0	16.0	18.0
HSDH1240H-4R7M	4.7	$\pm 20\%$	100	1000	14.5	18.0	9.0	10.0	15.0	16.0
HSDH1240H-6R8M	6.8	$\pm 20\%$	100	1000	19.0	24.0	7.0	8.0	10.0	11.0
HSDH1240H-100M	10	$\pm 20\%$	100	1000	35.0	44.0	5.0	5.5	7.5	8.0
HSDH1240H-220M	22	$\pm 20\%$	100	1000	65.0	75.0	4.5	5.0	6.5	7.0
HSDH1240H-330M	33	$\pm 20\%$	100	1000	78.0	90.0	4.0	4.5	5.5	6.0

电性能参数 Electrical Characteristic List (1250系列)

型号规格 Part NO.	标称感量 Inductance (μ H)	精度级别 Accuracy Grade	测试频率 Test Frequency (KHz)	测试电压 Test Voltage (mV)	直流电阻 Rdc (m Ω)		额定电流 Idc (A)		饱和电流 Isat (A)	
					Typ	Max	Max	Typ	Max	Typ
HSDH1250H-R22M	0.22	$\pm 20\%$	100	1000	0.6	0.8	42.0	45.0	45.0	50.0
HSDH1250H-R33M	0.33	$\pm 20\%$	100	1000	1.0	1.2	37.0	38.0	44.0	48.0
HSDH1250H-R47M	0.47	$\pm 20\%$	100	1000	1.1	1.4	35.0	36.0	42.0	45.0
HSDH1250H-R68M	0.68	$\pm 20\%$	100	1000	1.4	1.7	26.0	28.0	34.0	38.0
HSDH1250H-1R0M	1.0	$\pm 20\%$	100	1000	2.1	2.6	24.0	26.0	30.0	35.0
HSDH1250H-1R5M	1.5	$\pm 20\%$	100	1000	2.6	3.2	22.0	23.0	26.0	30.0
HSDH1250H-2R2M	2.2	$\pm 20\%$	100	1000	4.8	5.8	16.0	17.0	22.0	26.0
HSDH1250H-3R3M	3.3	$\pm 20\%$	100	1000	6.2	7.5	15.0	16.0	21.0	24.0
HSDH1250H-4R7M	4.7	$\pm 20\%$	100	1000	10.5	13.0	12.0	13.0	19.0	20.0
HSDH1250H-4R7M01	4.7	$\pm 20\%$	100	1000	8.5	10.5	13.0	14.0	17.0	18.0
HSDH1250H-6R8M	6.8	$\pm 20\%$	100	1000	15.8	20.0	9.0	10.0	15.0	16.0
HSDH1250H-8R2M	8.2	$\pm 20\%$	100	1000	21.5	27.0	8.5	9.0	15.0	16.0
HSDH1250H-100M	10	$\pm 20\%$	100	1000	27.5	35.0	6.5	7.0	13.0	14.0
HSDH1250H-150M	15	$\pm 20\%$	100	1000	36.0	45.0	6.0	6.5	10.0	11.0
HSDH1250H-220M	22	$\pm 20\%$	100	1000	46.0	57.0	5.5	6.0	8.5	9.0
HSDH1250H-330M	33	$\pm 20\%$	100	1000	72.0	82.0	4.5	5.0	6.5	7.0
HSDH1250H-470M	47	$\pm 20\%$	100	1000	85.0	95.0	4.0	4.5	5.5	6.0
HSDH1250H-680M	68	$\pm 20\%$	100	1000	135.0	150.0	3.0	3.5	4.5	5.0
HSDH1250H-101M	100	$\pm 20\%$	100	1000	160.0	180.0	2.5	3.0	3.5	4.0

电性能参数 Electrical Characteristic List (1260系列)

型号规格 Part NO.	标称感量 Inductance (μH)	精度级别 Accuracy Grade	测试频率 Test Frequency (KHz)	测试电压 Test Voltage (mV)	直流电阻 Rdc ($\text{m}\Omega$)		额定电流 Idc (A)		饱和电流 Isat (A)	
					Typ	Max	Max	Typ	Max	Typ
HSDH1260H-R22M	0.22	$\pm 20\%$	100	1000	0.5	0.6	42.0	45.0	55.0	60.0
HSDH1260H-R33M	0.33	$\pm 20\%$	100	1000	0.6	0.75	38.0	40.0	55.0	60.0
HSDH1260H-R82M	0.82	$\pm 20\%$	100	1000	1.5	1.8	26.0	28.0	33.0	35.0
HSDH1260H-1R0M	1.0	$\pm 20\%$	100	1000	2.1	2.6	24.0	26.0	33.0	35.0
HSDH1260H-1R5M	1.5	$\pm 20\%$	100	1000	2.2	2.7	23.0	24.0	28.0	30.0
HSDH1260H-1R5M02	1.5	$\pm 20\%$	100	1000	2.4	3.0	22.0	24.0	32.0	34.0
HSDH1260H-2R2M	2.2	$\pm 20\%$	100	1000	3.1	3.8	20.0	22.0	26.0	27.0
HSDH1260H-3R3M	3.3	$\pm 20\%$	100	1000	5.0	6.0	16.0	17.0	25.0	26.0
HSDH1260H-4R7M	4.7	$\pm 20\%$	100	1000	7.5	9.0	14.0	15.0	19.0	20.0
HSDH1260H-5R6M	5.6	$\pm 20\%$	100	1000	9.0	11.0	13.0	14.0	17.0	18.0
HSDH1260H-6R8M	6.8	$\pm 20\%$	100	1000	10.5	13.0	12.0	13.0	16.0	17.0
HSDH1260H-8R2M	8.2	$\pm 20\%$	100	1000	15.0	20.0	9.0	10.0	15.0	16.0
HSDH1260H-100M	10	$\pm 20\%$	100	1000	15.0	20.0	9.0	10.0	13.0	14.0
HSDH1260H-100M01	10	$\pm 20\%$	100	1000	13.0	16.0	10.0	11.0	14.0	15.0
HSDH1260H-150M	15	$\pm 20\%$	100	1000	27.0	35.0	6.5	7.0	12.0	13.0
HSDH1260H-180M	18	$\pm 20\%$	100	1000	29.0	36.0	6.5	7.0	12.0	13.0
HSDH1260H-220M	22	$\pm 20\%$	100	1000	32.0	40.0	6.3	6.8	9.0	10.0
HSDH1260H-270M	27	$\pm 20\%$	100	1000	50.0	56.0	5.2	5.8	8.5	9.0
HSDH1260H-330M	33	$\pm 20\%$	100	1000	56.5	65.0	5.0	5.5	8.5	9.0
HSDH1260H-470M	47	$\pm 20\%$	100	1000	60.0	70.0	5.0	5.5	5.5	6.0
HSDH1260H-680M	68	$\pm 20\%$	100	1000	100.0	112.0	4.0	4.5	4.5	5.0
HSDH1260H-820M	82	$\pm 20\%$	100	1000	145.0	162.0	2.5	3.2	4.5	5.0
HSDH1260H-101M	100	$\pm 20\%$	100	1000	155.0	175.0	2.2	3.0	4.0	4.5

电性能参数 Electrical Characteristic List (1265系列)

型号规格 Part NO.	标称感量 Inductance (μH)	精度级别 Accuracy Grade	测试频率 Test Frequency (KHz)	测试电压 Test Voltage (mV)	直流电阻 Rdc ($\text{m}\Omega$)		额定电流 Idc (A)		饱和电流 Isat (A)	
					Typ	Max	Max	Typ	Max	Typ
HSDH1265H-R82M	0.82	$\pm 20\%$	100	1000	1.5	1.8	26.0	28.0	33.0	35.0
HSDH1265H-1R0M	1.0	$\pm 20\%$	100	1000	2.1	2.6	24.0	26.0	33.0	35.0
HSDH1265H-1R2M	1.2	$\pm 20\%$	100	1000	2.1	2.6	24.0	26.0	33.0	35.0
HSDH1265H-1R5M	1.5	$\pm 20\%$	100	1000	2.2	2.7	23.0	24.0	28.0	30.0
HSDH1265H-1R5M02	1.5	$\pm 20\%$	100	1000	2.4	2.9	22.0	24.0	32.0	34.0
HSDH1265H-2R2M	2.2	$\pm 20\%$	100	1000	3.1	3.8	20.0	22.0	28.0	30.0
HSDH1265H-3R3M	3.3	$\pm 20\%$	100	1000	5.0	6.0	16.0	17.0	25.0	26.0

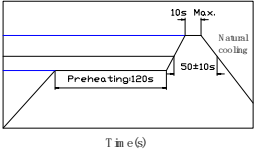
电性能参数 Electrical Characteristic List (1265系列)

型号规格 Part NO.	标称感量 Inductance (μ H)	精度级别 Accuracy Grade	测试频率 Test Frequency (KHz)	测试电压 Test Voltage (mV)	直流电阻 Rdc (m Ω)		额定电流 Idc (A)		饱和电流 Isat (A)	
					Typ	Max	Max	Typ	Max	Typ
HSDH1265H-4R7M	4.7	$\pm 20\%$	100	1000	7.5	9.0	14.0	15.0	19.0	20.0
HSDH1265H-5R6M	5.6	$\pm 20\%$	100	1000	9.0	11.0	13.0	14.0	17.0	18.0
HSDH1265H-6R8M	6.8	$\pm 20\%$	100	1000	10.5	13.0	12.0	13.0	16.0	17.0
HSDH1265H-8R2M	8.2	$\pm 20\%$	100	1000	13.0	16.0	10.0	11.0	15.0	16.0
HSDH1265H-100M	10	$\pm 20\%$	100	1000	15.0	18.0	9.0	10.0	13.0	14.0
HSDH1265H-100M01	10	$\pm 20\%$	100	1000	13.0	16.0	10.0	11.0	14.0	15.0
HSDH1265H-150M	15	$\pm 20\%$	100	1000	27.0	34.0	6.5	7.0	12.0	13.0
HSDH1265H-180M	18	$\pm 20\%$	100	1000	29.0	36.0	6.5	7.0	12.0	13.0
HSDH1265H-220M	22	$\pm 20\%$	100	1000	32.0	40.0	6.3	6.8	9.0	10.0
HSDH1265H-270M	27	$\pm 20\%$	100	1000	50.0	56.0	5.2	5.8	8.5	9.0
HSDH1265H-330M	33	$\pm 20\%$	100	1000	56.5	65.0	5.0	5.5	8.5	9.0
HSDH1265H-470M	47	$\pm 20\%$	100	1000	60.0	70.0	5.0	5.5	5.5	6.0
HSDH1265H-680M	68	$\pm 20\%$	100	1000	100.0	112.0	4.0	4.5	4.5	5.0
HSDH1265H-820M	82	$\pm 20\%$	100	1000	145.0	165.0	2.5	3.2	4.5	5.0
HSDH1265H-101M	100	$\pm 20\%$	100	1000	155.0	175.0	2.2	3.0	4.0	4.5

电性能参数 Electrical Characteristic List (1265系列)

型号规格 Part NO.	标称感量 Inductance (μ H)	精度级别 Accuracy Grade	测试频率 Test Frequency (KHz)	测试电压 Test Voltage (mV)	直流电阻 Rdc (m Ω)		额定电流 Idc (A)		饱和电流 Isat (A)	
					Typ	Max	Max	Typ	Max	Typ
HSDH1770T-2R2M	2.2	$\pm 20\%$	100	1000	2.3	2.7	28.0	26.0	40.0	36.0
HSDH1770T-4R7M	4.7	$\pm 20\%$	100	1000	3.9	5.0	20.0	18.0	35.0	32.0
HSDH1770T-6R8M	6.8	$\pm 20\%$	100	1000	5.7	6.9	13.0	11.0	23.0	21.0
HSDH1770T-100M	10	$\pm 20\%$	100	1000	7.1	8.5	10.0	9.0	18.0	16.0
HSDH1770T-220M	22	$\pm 20\%$	100	1000	20.0	24.0	8.0	7.2	15.0	14.0
HSDH1770T-330M	33	$\pm 20\%$	100	1000	26.0	35.0	6.5	6.0	11.0	10.0
HSDH1770T-470M	47	$\pm 20\%$	100	1000	39.0	47.0	6.0	5.5	10.0	9.0
HSDH1770T-680M	68	$\pm 20\%$	100	1000	67.0	80.0	5.0	4.5	9.0	8.2
HSDH1770T-101M	100	$\pm 20\%$	100	1000	104.0	125.0	4.0	3.6	7.0	6.3
HSDH1770T-351M	350	$\pm 20\%$	100	1000	382.0	458.0	2.0	1.8	3.5	3.2

5 可靠性试验项目 Reliability Testing Items

测试项目 TEST ITEMS	规格要求 SPECIFICATIONS	测试条件/测试方法 TEST CONDITIONS / TEST METHODS
(1) 电气特性测试 ELECTRICAL PERFORMANCE TEST		
电感量 (L)	参照特性参数表 Refer to standard electrical characteristic list.	Microtest 6377
直流电阻 (Rdc)	参照特性参数表 Refer to standard electrical characteristic list.	TH 2511
额定电流 (Idc)	参照特性参数表 Refer to standard electrical characteristic list.	加载电流后, 电感量下降不超过 30%, 或温升不超过 40°C。 Applied the current to coils the inductance change should be less than 30% to initial value and temperature rise should not be 40°C typical.
温升测试 Temperature rise test	温升不超过 40°C The temperature rise does not exceed 40°C.	加载额定电流, 保持 4 小时。 Applied the allowed dc current for 4 hours.
过载测试 Overload test	没有明显的电气损坏 No evidence of electrical damage.	加载 1.5 倍额定电流, 保持 5 分钟。 Applied 1.5 times of rated allowed dc current to inductors for a period of 5 minutes.
(2) 机械特性测试 Mechanical performance test		
可焊性测试 Solder ability test	至少 95% 端电极表面被焊锡覆盖。 At least 95% of terminal electrode should be covered with solder.	预热温度: 150°C 预热时间: 120s 焊锡温度: 255°C ± 5°C 浸锡时间: 10s Max Preheating temperature: 150°C Preheating time: 120s Solder temperature: 255 ± 5°C Duration: 10s Max 
耐焊性 Resistance to soldering	至少 95% 的焊锡覆盖在电极表面。 无可见机械损伤。 电感量变化不超过 10%。 At least 95% of terminal electrode should be covered with solder. No mechanical damage. Inductance should not change more than ±10%.	参照回流焊曲线过 3 次。 Repeat the reflow curve twice.

5 可靠性试验项目 Reliability Testing Items

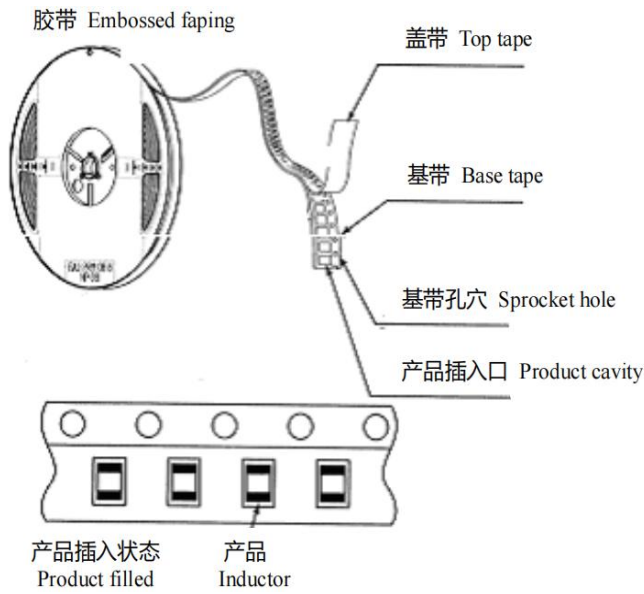
测试项目 Test Items	规格要求 Specifications	测试条件/测试方法 Test Conditions / Test Methods
振动测试 Vibration test	无可见机械损伤。 电感量变化不超过 10%。 No mechanical damage. Inductance should not hange more than $\pm 10\%$.	振幅: 1.5mm 测试时间: 沿三个垂直方向各做 2 小时 频率范围: 10Hz~55Hz~10Hz (1分钟) Amplitude modulation: 1.5mm Test time: A period of 2h in each of 3 mutually perpendicular directions. Frequency range: 10Hz to 55Hz to 10Hz for 1min.
冲击测试 Shock test	无可见机械损伤。 电感量变化不超过 10%。 No mechanical damage. Inductance should not hange more than $\pm 10\%$.	持续时间: 6ms 峰值加速度: 100g 方向: $\pm X \pm Y \pm Z$ (6 个方向) 冲击次数: 每个方向施加三次连续冲击 (共 18 次)。 Duration: 6ms Peak acceleration: 100g Direction: $\pm X \pm Y \pm Z$ (6 directions) Number of shocks: Three consecutive shocks in each direction (total 18 times).
端电极强度 Adhesion of electrode	无可见机械损伤。 电感量变化不超过 10%。 No mechanical damage. Inductance should not change more than $\pm 10\%$.	施加一个 17.7N (1.8kg) 的力到测试器件的侧面, 施加时间为 60 ± 1 秒。 A 17.7N(1.8kg) force is applied to the side of the inductance for $60(\pm 1)$ s.
板弯曲测试 Circuit board bending test	无可见机械损伤。 电感量变化不超过 10%。 No mechanical damage. Inductance should not change more than $\pm 10\%$.	施加使线路板弯曲至少 $(D)x = 2\text{mm}$ 的力, 施加外力的持续时间应为 60 ± 5 秒。 Apply a force to bend the circuit board at least $(D)x=2\text{mm}$, and the duration of the applied force should be $60(\pm 5)$ s.
(3) 环境测试 CLIMATIC TEST		
工作温度范围 Operating temperature range	- 45°C ~ + 125°C	包含产品表面温升。 Includes product surface temperature rise.
耐高温 High temperature resistance	无可见机械损伤。 电感量变化不超过 10%。 No mechanical damage. Inductance should not hange more than $\pm 10\%$.	+ 125°C $\pm 2^\circ\text{C}$ / 1000h 室温静置 1 小时后测试。 Test at room temperature for 1 hour.

5 可靠性试验项目 Reliability Testing Items

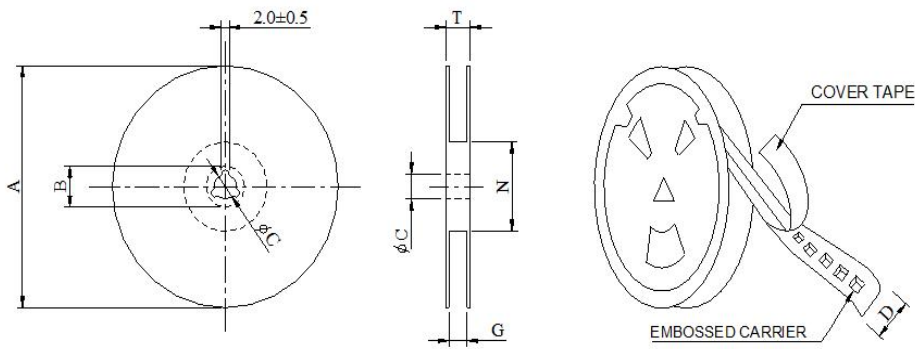
测试项目 Test Items	规格要求 Specifications	测试条件/测试方法 Test Conditions / Test Methods
耐低温 Low temperature resistance	无可见机械损伤。 电感量变化不超过 10%。 No mechanical damage. Inductance should not hange more than $\pm 10\%$.	- 45°C \pm 2°C / 1000h 室温静置1小时后测试。 Test at room temperature for 1 hour.
温度冲击 Temperature shock	无可见机械损伤。 电感量变化不超过 10%。 No mechanical damage. Inductance should not hange more than $\pm 10\%$.	温度：- 45°C，30 \pm 3 分钟 + 125°C，30 \pm 3 分钟 循环次数：1000 Temperature: - 45°C for 30 \pm 3min + 125°C for 30 \pm 3min Number of cycles: 1000
恒定湿热 Static humidity	无可见机械损伤。 电感量变化不超过 10%。 No mechanical damage. Inductance should not hange more than $\pm 10\%$.	湿度：85% RH 温度：85°C \pm 2°C 测试时间：1000 \pm 2 h Humidity: 85% RH Temperature: 85°C \pm 2°C Testing time: 1000 \pm 2h

6 产品包装 Packaging

(1) 编带图 Taping drawings



(2) 卷盘尺寸 Reel dimensions (Unit: mm)

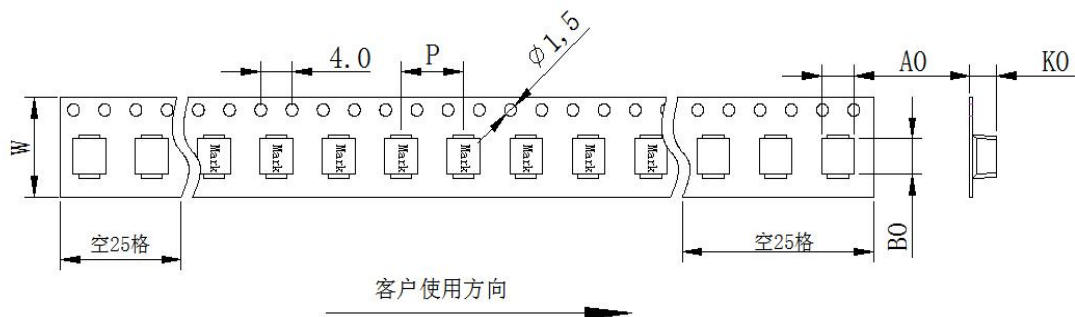


*CARRIER TAPE WIDTH: D

Unit: mm

尺寸 Size	A	B	C	D	G	N	T
JP-20	330	21	13	16	17	100	20
JP-28	330	21	13	24	25	100	28

(3) 编带尺寸 Taping dimensions (Unit: mm)



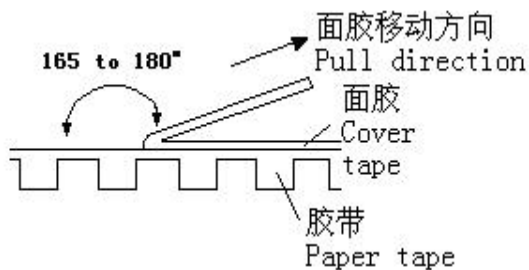
6 产品包装 Packaging

(3) 编带尺寸 Taping dimensions (Unit: mm)

型号 Size	P	W	A0	B0	K0
0412系列	8.00 ± 0.10	12.00 ± 0.30	4.40 ± 0.20	4.90 ± 0.20	1.40 ± 0.15
0415系列	8.00 ± 0.10	12.00 ± 0.30	4.40 ± 0.20	4.90 ± 0.20	2.20 ± 0.15
0420系列	8.00 ± 0.10	12.00 ± 0.30	4.40 ± 0.20	4.90 ± 0.20	2.20 ± 0.15
0515系列	8.00 ± 0.10	16.00 ± 0.30	5.40 ± 0.20	6.20 ± 0.20	2.20 ± 0.15
0518系列	8.00 ± 0.10	16.00 ± 0.30	5.40 ± 0.20	6.20 ± 0.20	2.20 ± 0.15
0520系列	8.00 ± 0.10	16.00 ± 0.30	5.40 ± 0.20	6.20 ± 0.20	2.20 ± 0.15
0530系列	8.00 ± 0.10	16.00 ± 0.30	5.40 ± 0.20	6.20 ± 0.20	3.20 ± 0.15
0540系列	8.00 ± 0.10	16.00 ± 0.30	5.40 ± 0.20	6.20 ± 0.20	4.20 ± 0.15
0615系列	12.00 ± 0.10	16.00 ± 0.30	6.90 ± 0.20	7.60 ± 0.20	2.20 ± 0.15
0618系列	12.00 ± 0.10	16.00 ± 0.30	6.90 ± 0.20	7.60 ± 0.20	2.20 ± 0.15
0620系列	12.00 ± 0.10	16.00 ± 0.30	6.90 ± 0.20	7.60 ± 0.20	2.20 ± 0.15
0624系列	12.00 ± 0.10	16.00 ± 0.30	6.90 ± 0.20	7.60 ± 0.20	2.60 ± 0.15
0628系列	12.00 ± 0.10	16.00 ± 0.30	6.90 ± 0.20	7.60 ± 0.20	3.20 ± 0.15
0630系列	12.00 ± 0.10	16.00 ± 0.30	6.90 ± 0.20	7.60 ± 0.20	3.20 ± 0.15
0640系列	12.00 ± 0.10	16.00 ± 0.30	6.90 ± 0.20	7.60 ± 0.20	5.20 ± 0.15
0650系列	12.00 ± 0.10	16.00 ± 0.30	6.90 ± 0.20	7.60 ± 0.20	5.20 ± 0.15
0830系列	12.00 ± 0.10	24.00 ± 0.30	8.40 ± 0.10	9.90 ± 0.10	3.20 ± 0.15
0840系列	12.00 ± 0.10	24.00 ± 0.30	8.40 ± 0.10	9.90 ± 0.10	5.20 ± 0.15
0850系列	12.00 ± 0.10	24.00 ± 0.30	8.40 ± 0.20	9.90 ± 0.10	5.20 ± 0.15
1030系列	16.00 ± 0.10	24.00 ± 0.30	10.60 ± 0.20	11.80 ± 0.20	3.20 ± 0.15
1040系列	16.00 ± 0.10	24.00 ± 0.30	10.60 ± 0.20	11.80 ± 0.20	4.20 ± 0.15
1045系列	16.00 ± 0.10	24.00 ± 0.30	10.60 ± 0.20	11.80 ± 0.20	5.20 ± 0.15
1050系列	16.00 ± 0.10	24.00 ± 0.30	10.60 ± 0.20	11.80 ± 0.20	5.20 ± 0.15
1235系列	16.00 ± 0.10	24.00 ± 0.30	13.20 ± 0.20	14.60 ± 0.20	3.70 ± 0.15
1240系列	16.00 ± 0.10	24.00 ± 0.30	13.20 ± 0.20	14.60 ± 0.20	5.20 ± 0.15
1250系列	16.00 ± 0.10	24.00 ± 0.30	13.20 ± 0.20	14.60 ± 0.20	5.20 ± 0.15
1260系列	16.00 ± 0.10	24.00 ± 0.30	13.20 ± 0.20	14.60 ± 0.20	6.80 ± 0.15
1265系列	16.00 ± 0.10	24.00 ± 0.30	13.20 ± 0.20	14.60 ± 0.20	6.80 ± 0.15

6 产品包装 Packaging

(4) 剥离力检验 Peeling off force



- a. 盖带的剥离力：沿面胶移动方向拉时要求剥离力为 20g~150g。

Peeling force should be 20~150g pulling in the direction of arrow.

- b. 在胶带剥落时，面胶不能有破损。

The cover bond should not be damaged when it peeled off.

(5) 包装数量 Packaging number

单位 Unit: 粒 (PCS)

型号 Size	卷盘数量 Reel	内盒数量 Box	外箱数量 Case
0412-0420系列	3000	9000	27000
0515-0520系列	3000	9000	27000
0530-0540系列	2000	6000	18000
0615-0624系列	2000	6000	18000
0628-0650系列	1000	3000	9000
0830-0850系列	1000	2000	6000
1030-1040系列	1000	2000	6000
1045-1050系列	800	1600	4800
1235-1265系列	500	1000	3000
1770系列	200	400	800